



Expanded Mesh

Expanded Mesh | Metal Product | Accessories

www.metex.ae

CONTENTS

INTRODUCTION 3

Block Work Reinforcement

Block Work Mesh	8
Block Reinforcement-Ladder Type	8
Block Reinforcement-Truss Type	9
Corner Reinforcement	9

LINTELS

Lintel Brackets	11
-----------------	----

BLOCK TIES

Frame Cramps	14
Movement Ties	14
Cavity Wall Ties	14
Wire Ties	15
Head Restraints	16
Anchor Plates	16
Channels	17
Dove Tail Anchor Channels	17
Partition Top Anchor	17

BEADS

Angle Bead	20
Micro Angle Bead	20
Plaster Stop Bead	21
Micro Plaster Stop Beads	21
Architrave Bead	22
Architrave Bead Double Side Mesh	22
Movement Bead	23
Control Joint Bead	23

PLASTER MESH

Corner Lath	25
Sheet Lath	25
Strip Mesh	26
Coil Lath	27

RIB LATH

Rib Lath	29
Hy Rib Lath	30

FIBER GLASS MESH FOR PLASTERING	34
--	-----------

ALUMINUM CHANNEL	36
-----------------------------	-----------

WALL AND CEILING MESH	37
----------------------------------	-----------

TECHNICAL SPECIFICATIONS	38
-------------------------------------	-----------

INTRODUCTION

Metex Metal Expansion Factory is part of Al Waseef Industries Group of Companies. The Group has diverse business portfolios with branches in Dubai, U.A.E. and across the G.C.C.

OUR MISSION

Provide the best service, supply quality products at competitive prices, and meet the needs and demands of our customers at all times.

ABOUT US

Metex Metal Expansion Factory, (ISO certified - ISO 9001:2015), is engaged in manufacturing of industrial products like expanded mesh, reinforcement items, suspension systems, drywall partitions and ceiling systems since 1997. Metex products are made as per BS Standards and they are well known in the UAE and MENA markets for superior quality. Metex products are also certified by world renowned institutions like DAR, TUV, BM TRADA, UKAS etc.

Operating from a purposely built manufacturing plant in Dubai, U.A.E. Metex and the Group committed to the provision of high standards of Service, Quality, Innovation, and Professional Expertise, guaranteeing satisfaction to build long term business relationship based on mutual benefit both for ourselves and our Customers long term business relationship. While there are other competitors offering similar products and services, we believe that we are always unrivaled in our desire to be consistent.



EXPANDED METAL PRODUCTS OF METEX INCLUDES:

BLOCK WORK ACCESSORIES

Brick/Block Mesh, Ladder Mesh, Wall tie, Cavity tie and Lintel.

PLASTERING ACCESSORIES

Angle Bead, Plaster Stop Bead, Micro Angle Bead, Micro Plaster Stop Bead, Corner Mesh, Strip Lath, Sheet Lath, Rib Lath, Hyrib Lath, Fiber Mesh, Architrave Bead, Control Joint and Movement Bead.

PROFILES

Furring Channel, Stud Channel, Track Channel, Main Channel, Perimeter/ Wall Angle Channel.

OTHER MESH PRODUCTS

Ceiling Mesh, Fencing, Welded Wire Mesh, Decorative Mesh, Mesh for facade

COIL SERVICES

Slitting, Cut to length

Trading

PACKING

METEX products are packed or bundled for easy and safe transportation carrying labels that displays product name, reference number and quantity.

DELIVERY

Our logistics team are able to cover the entire UAE and GCC market, Depending on requirement and urgency.



متكس مصنع تمديد المعادن
METEX METAL EXPANSION FACTORY

“Helping
To build today
A Better
Tomorrow”

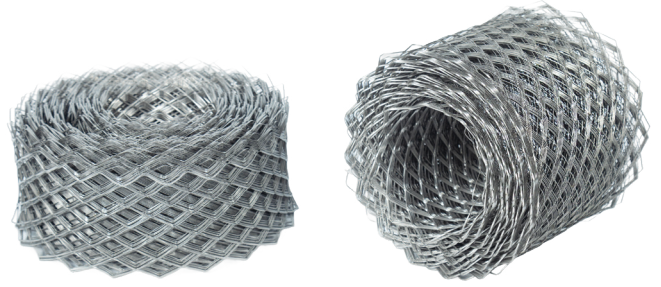
TO BE A LEADING SUPPLIER OF
STEEL PRODUCTS IN UAE AND
MENA REGION. TO EXPAND OUR
PRODUCTS VARIATION USING
THE LATEST TECHNOLOGICAL
INNOVATIONS IN THE INDUSTRY
WITH FOCUS ON QUALITY AND
SUSTAINABILITY TO BETTER
SERVE OUR CUSTOMERS.

Block Work Reinforcement

- ✕ Block Work Mesh
- ✕ Block Reinforcement Ladder Type
- ✕ Block Reinforcement Truss Type
- ✕ Corner Reinforcement (L-Type & T-Type)

Block Work Mesh

Block Mesh is used in block works where extra strength and stability are required as on footings, parapets and localized stress areas. Block works with Mesh reinforcement helps the walls to resist stress caused by vibrations and thermal changes. Block work mesh should be used in every alternate course of a wall. Combinations of different widths of Block Mesh may be used to suit any wall thickness.



GALVANIZED STEEL

Reference Code	Length in (m)	Width (mm)
BRG 080	50/100	80
BRG 100	50/100	100
BRG 150	50/100	150
BRG 175	50/100	175
BRG 200	50/100	200
BRG 250	50/100	250
BRG 300	50/100	300
BRG 350	50/100	350

STAINLESS STEEL

Reference Code	Length in (m)	Width (mm)
BRS 080	50/100	80
BRS 100	50/100	100
BRS 150	50/100	150
BRS 175	50/100	175
BRS 200	50/100	200
BRS 250	50/100	250
BRS 300	50/100	300
BRS 350	50/100	350

*Special widths up to 700mm and lengths are available upon request.

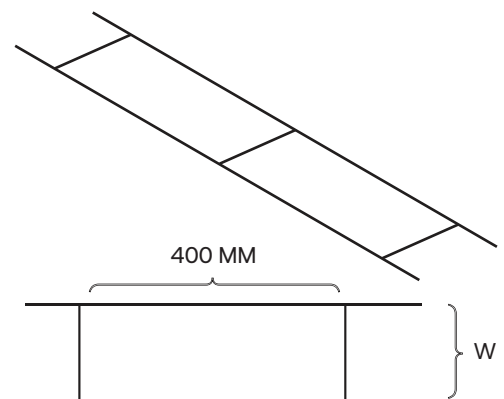
Block Reinforcement

Ladder Type

Ladder Type reinforcements are designed to be embedded in the horizontal mortar joints of masonry walls. It consists of two parallel side rods with cross rods at 16" (400mm) distances thus forming a ladder configuration. Overall measurement side to side approximately 50 mm (2") less than the nominal wall thickness to be embedded in masonry.



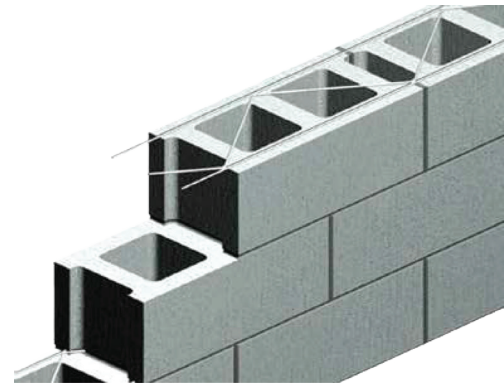
Galvanized Steel	Stainless Steel	Width (mm)	Length (mm)	Wire Size (mm)	Packing Pcs/Bundle
LMG050	LMS050	50	3000	3/4/5	20/10
LMG100	LMS100	100	3000	3/4/5	20/10
LMG150	LMS150	150	3000	3/4/5	20/10
LMG200	LMS200	200	3000	3/4/5	20/10
LMG250	LMS250	250	3000	3/4/5	20/10
LMG300	LMS300	300	3000	3/4/5	20/10



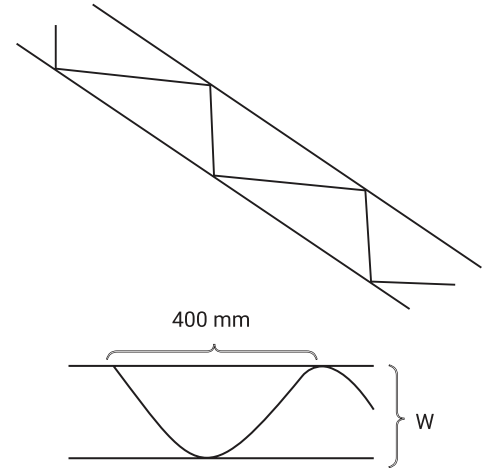
Block Reinforcement

Truss Type

Truss type masonry wire reinforcements are designed to be embedded in the horizontal mortar joints of masonry walls. It consists of two parallel longitudinal deformed or plain side rods well connected to a continuous diagonal formed cross rod forming a truss designs with alternating welds not exceeding 800 mm (31") overall. The cross rods are electrically butt-welded to deformed side rods in a single plane.

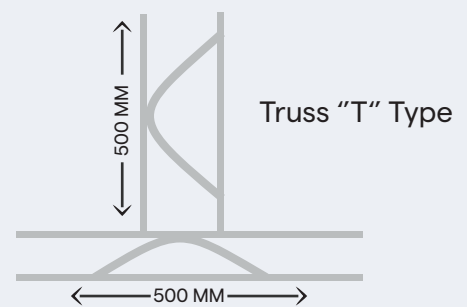
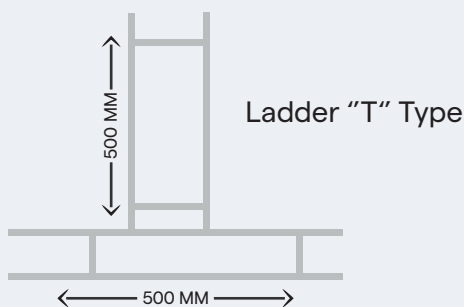
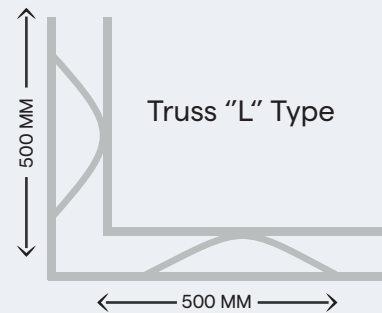
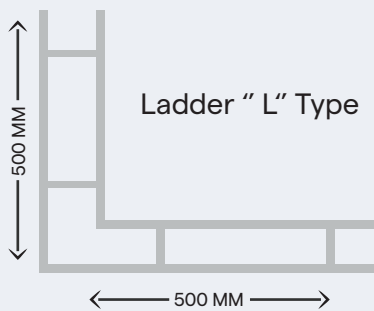


Galvanized Steel	Stainless Steel	Width (mm)	Length (mm)	Wire Size (mm)	Packing Pcs/Bundle
LMG050 - TR	LMS050 - TR	50	3000	3/4/5	20
LMG100 - TR	LMS100 - TR	100	3000	3/4/5	20
LMG150 - TR	LMS150 - TR	150	3000	3/4/5	20
LMG200 - TR	LMS200 - TR	200	3000	3/4/5	20
LMG250 - TR	LMS250 - TR	250	3000	3/4/5	20
LMG300 - TR	LMS300 - TR	300	3000	3/4/5	20



Corner Reinforcement

L-Type and T-Type



Lintels

Lintels

Steel lintel is a structural horizontal channel beam that spans the space or opening between two vertical supports, such as over doors and windows.

Lintels provide a combination of strength and light weight resulting in efficient load bearing performance and increased productivity at site. They are characterized by their ease of installation as well as time saving since block work can be continued without delay

Features & Benefits

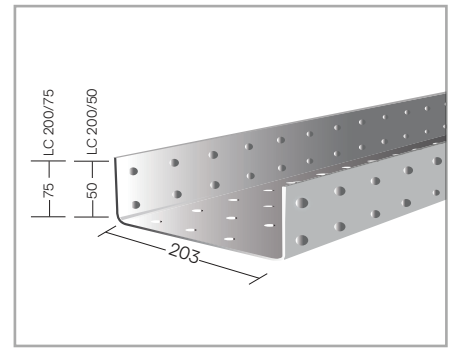
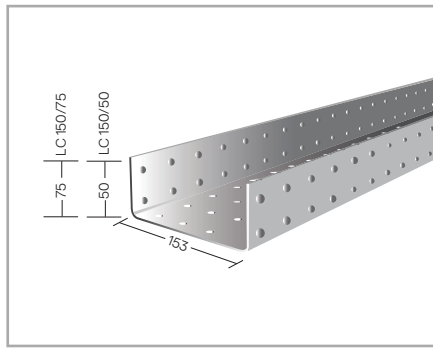
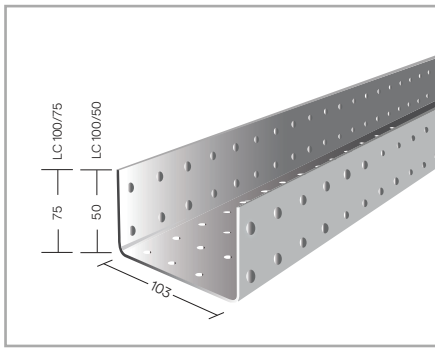
- Time saving and effective.
- Easy to use with two men can handle the job.
- Block work can be continued without delay.



Installation

- Lintels should be installed with a 20cm bearing at each end and should be fully bedded on block work mortar.
- Lintels cannot be altered from the original manufactured sizes (like cutting or welding).
- Lintels must be used as per the weight standards (not exceeding actual load bearing capacity).
- To avoid chance of deflection, support must be provided at the center until mortar is dry.
- Damaged lintels cannot be used.

*Load calculation can be provided as per client's request for which size and density of block, density of plaster and plaster thickness is required.



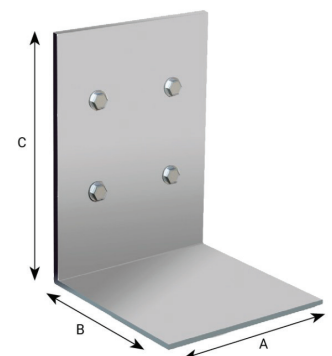
Steel Lintel Safe Load Span

Reference Code	Flange Height(mm)	Width of Lintel (mm)	Thickness Gauge(mm)	0.90	1.0	1.60	1.90	2.20	2.50	2.80
				1.20	1.50	1.80	2.10	2.40	2.60	3.00
THE WEIGHTS MENTIONED BELOW ARE IN TONS										
MLT100A	50	100	2.0	0.55	0.42	0.31	—	—	—	—
	50	100	2.5	0.80	0.58	0.38	0.24	0.18	0.16	—
	50	100	3.0	1.12	0.66	0.44	0.31	0.25	0.47	0.13
MLT100B	75	100	3.0	1.63	1.25	1.00	0.86	0.64	—	0.38
MLT150A	50	150	2.0	0.48	0.37	0.27	—	—	—	—
	50	150	2.5	0.76	0.58	0.41	0.27	0.19	—	—
	50	150	3.0	1.22	0.79	0.52	0.37	0.28	—	—
MLT150B	75	150	3.0	1.63	1.25	1.00	0.86	0.64	—	—
MLT200A	50	200	2.0	0.62	0.48	0.35	—	—	—	—
	50	200	2.5	0.77	0.59	0.41	0.29	0.21	—	0.21
	50	200	3.0	1.05	0.80	0.53	0.38	0.28	—	0.28
MLT200B	75	200	3.0	1.63	1.25	1.00	0.86	0.64	0.47	0.37
MLT250A	50	250	2.0	0.62	0.48	0.35	—	—	—	—
			2.5	0.77	0.59	0.41	0.29	0.21	—	0.21
			3.0	1.05	0.89	0.53	0.38	0.28	0.19	0.28

*Special lengths available upon request.

Lintel Brackets

Reference Code	A	B	C	Thickness (mm)	Applicable Lintel Width	Metal Expansion Anchor Quality Dia (mm)
MLB100	100	100	100	4/5/6	100	3M 8X80
MLB150	150	150	150	4/5/6	150	4M 8X80
MLB200	200	200	200	4/5/6	200	4M 8X80
MLB250	250	250	250	4/5/6	250	4M 8X80
MLB300	300	300	300	4/5/6	300	4M 8X80



*Special lengths available upon request.

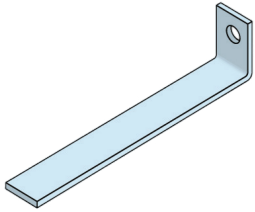
Block Ties

- ✕ Frame Cramps
- ✕ Cavity Wall Ties
- ✕ Head Restraints
- ✕ Channels
- ✕ Dove Tail Anchor Channels
- ✕ Movement Ties
- ✕ Wire Ties
- ✕ Anchor Plates
- ✕ Partition Top Anchor

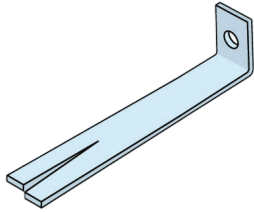
Wall ties play a vital role in ensuring the stability of a building. Metex offers a wide selection of wall ties of numerous shapes and sizes made from pre-galvanized steel, galvanized steel, and stainless steel, manufactured in various lengths to suit different wall cavity widths.

Frame Cramps

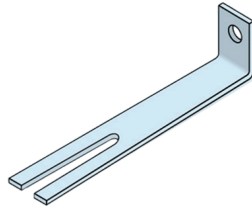
Metex Frame Cramps are designed to restrain the between masonry and vertical structures. Manufactured with minimum 6mm hole to suit a range of fixings. They can be fixed to a wide range of materials including concrete, steelwork, and masonry.



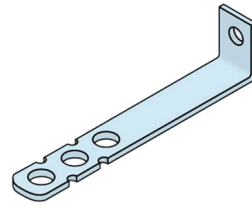
MWT
L-Plain Bolt/Screw



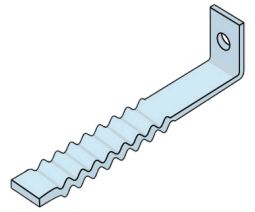
MLSS
L-Bolt/Screw on Split End



MLST
L-Slot Tie With U Cut End



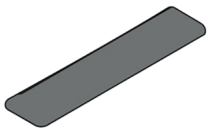
MLPS-S
L-Perforated Special Tie/Screw on



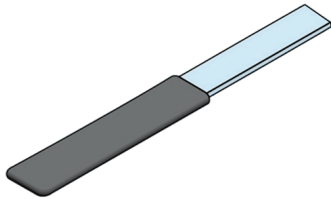
MCGWT
Corrugated Bolt Wall Tie

Movement Ties

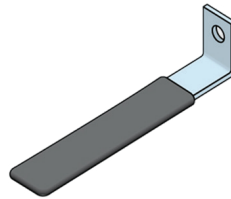
Movement Ties are used in conjunction with a debonding sleeves. The Tie is designed to restrain masonry against lateral wind loads while the sleeve allows the masonry to expand or contract.



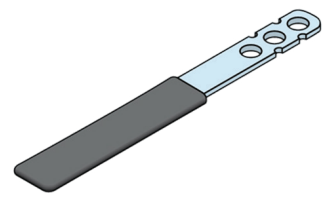
RS-200
Debonding Sleeve



MWT-PRS
Plain Wall Tie with Debonding Sleeve



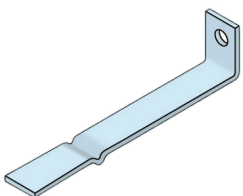
MWT-LPRS
L-Plain Wall Tie with Debonding Sleeve



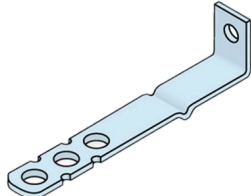
MWT-P
Perforated Tie with Debonding Sleeve

Cavity Wall Ties

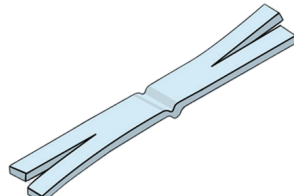
Cavity Wall Ties are used to join two leaves of a cavity wall together, allowing the two parts to act as a homogeneous unit. They are made of metal that span the Cavity and Tie the internal and external walls of bricks or blockwork together. The ends of the tie are designed to lock tightly into the mortar. The Ties are also designed to prevent water transfer from the outer to the inner leaf of the wall, this often takes the form of a twist in the tie or, if a wire tie, corrugations formed in the wire



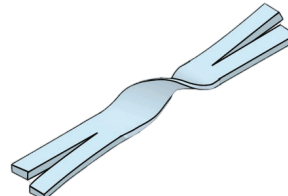
MCWT
Cavity Wall Tie Bolt/Screw On



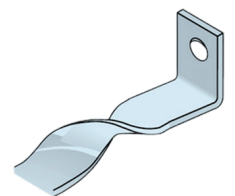
MLPS-SC
L - Perforated Bolt/Screw On Special Cavity Tie



MFCWT
Flat Two Side Split End Cavity Wall Tie



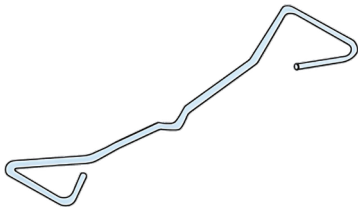
Two Sided Split Twist Tie



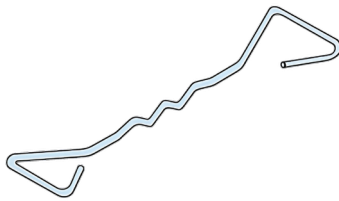
L Slot Tie With Twist

Length (mm)	Width (mm)	Upstand (mm)	Thickness (mm)	Material	Qty/Box
100	20 - 50	25 - 75	1.50 - 4.00	Galvanized Steel / Stainless Steel	500
125	20 - 50	25 - 75	1.50 - 4.00	Galvanized Steel / Stainless Steel	500
150	20 - 50	25 - 75	1.50 - 4.00	Galvanized Steel / Stainless Steel	500
175	20 - 50	25 - 75	1.50 - 4.00	Galvanized Steel / Stainless Steel	500
200	20 - 50	25 - 75	1.50 - 4.00	Galvanized Steel / Stainless Steel	500
225	20 - 50	25 - 75	1.50 - 4.00	Galvanized Steel / Stainless Steel	500
250	20 - 50	25 - 75	1.50 - 4.00	Galvanized Steel / Stainless Steel	500
300	20 - 50	25 - 75	1.50 - 4.00	Galvanized Steel / Stainless Steel	500

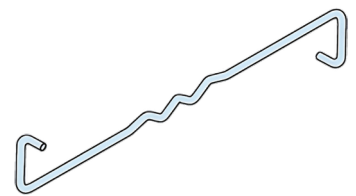
Wire Ties



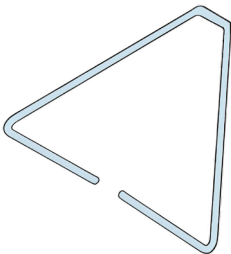
MDTW-SD
Double Triangle Wire Tie Single Drip



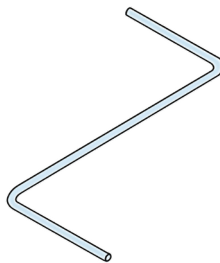
MDTW-DD
Double Triangle Wire Tie Double Drip



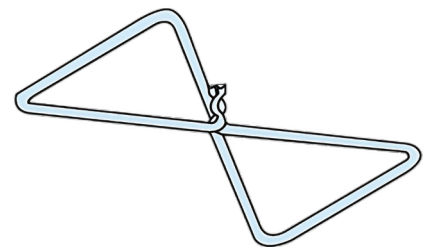
MZWT
Z Wire Tie



MWTCW
Triangular Wire Tie



MWTZ
Z Shape Wire Tie



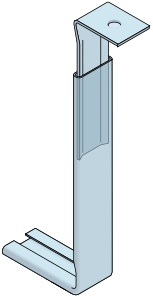
MWTB
Butterfly Wire Tie

Reference Code	Length (mm)	Wire Dia (mm)	Material	Qty/Box
MDTW-SD	150 - 300	3/4/5	Galvanized Steel / Stainless Steel	100
MDTW-DD	150 - 300	3/4/5	Galvanized Steel / Stainless Steel	100
MZWT	150 - 300	3/4/5	Galvanized Steel / Stainless Steel	100
MWTB	150 - 300	3/4/5	Galvanized Steel / Stainless Steel	100
MWTZ	150 - 300	3/4/5	Galvanized Steel / Stainless Steel	100
MWTCW	150 - 300	3/4/5	Galvanized Steel / Stainless Steel	100



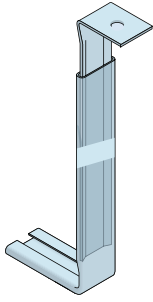
Head Restraints

Head Restraint Ties are designed to connect the freestanding wall to the overhead structure. It provides simple support to the top of a masonry panel by transferring lateral load (usually wind or internal pressure load) from the masonry to the primary structure, whilst allowing some vertical deflection (movement) in the frame in relation to the top of the wall.



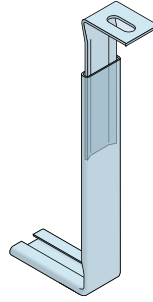
MVM1

Vertical Movement Tie Bolt Screw On



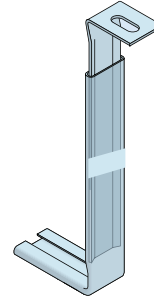
MVM2

Vertical Movement Tie Bolt Screw On



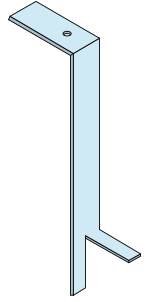
MVHM-ST1

Vertical Movement Tie Slot



MVHM-ST2

Vertical Movement Tie Slot



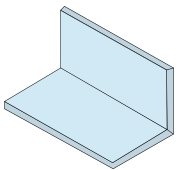
MWTCW

Ceiling Wall Strap Tie

Reference Code	Length	Width	Thickness	Material	Qty/Box
MVM1	200	35	1.50	Galvanized Steel / Stainless Steel	100
MVM2	200	35	1.50	Galvanized Steel / Stainless Steel	100
MVHM-ST1	200	35	1.50	Galvanized Steel / Stainless Steel	100
MVHM-ST2	200	35	1.50	Galvanized Steel / Stainless Steel	100
MWTCW	150/200/250/300	25	1.50/2.0/2.50/3.0	Galvanized Steel / Stainless Steel	100

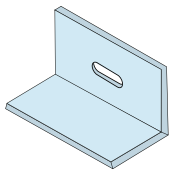
Anchor Plates

Anchor Plate prevents horizontal movement of the masonry wall. They are used to attach structural members to concrete structure. Anchor Plates and angles can be used to frame openings in concrete walls or as shelf angles.



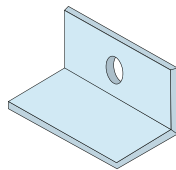
MAP

Plain Anchor Plate



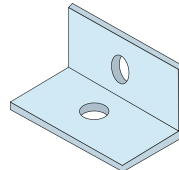
MAH-1

1 Side Slot Anchor Horizontal



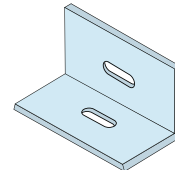
MAB-1

1 Side Anchor Bolt



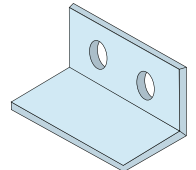
MAB-2

2 Side Bolt



MAH-2

2 Side Slot Anchor Horizontal



MADS

Double Anchor Bolt

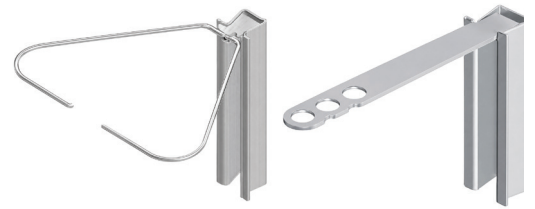
Channels

Channel system is designed to join and provide lateral support to the newly formed masonry with the existing vertical structure.



Dove Tail Anchor Channel

Dove Tail Anchor Channel is a self-anchoring channel used in conjunction with our range of channel ties to provide restraint to masonry panels. Channels are cast-in to the concrete during construction and after setting, the wire or strip tie is mated and embedded to the masonry which provides support to the structure. The Dove Tail Anchor Channel should be furnished with form filler inserts to protect channel from filling with concrete during installation.



Partition Top Anchor

Partition Top Anchors are designed to provide lateral shear resistance at the upper limit of masonry walls. They permit vertical deflection of the slab above, without transferring compressive loads to the masonry walls below. Metex Anchors are suitable for construction using steel or concrete. Tube with expansion filler is placed over rod anchor, which has been attached to concrete or steel by any of the methods illustrated. The vertical joint is then filled with mortar, fully surrounding the tube.



Reference Code	Plate Thk	Rod Dia	Rod Length	Qty/Box
MPTA2.5	2.5MM	10MM	150MM	50
MPTA4	4.0MM	10MM	150MM	50

Beads

- ✕ Angle Bead
- ✕ Micro Angle Bead
- ✕ Plaster Stop Bead
- ✕ Micro Plaster Stop Bead
- ✕ Architrave Bead
- ✕ Architrave Bead - Double Side Mesh
- ✕ Movement Bead
- ✕ Control Joint Bead

General Information

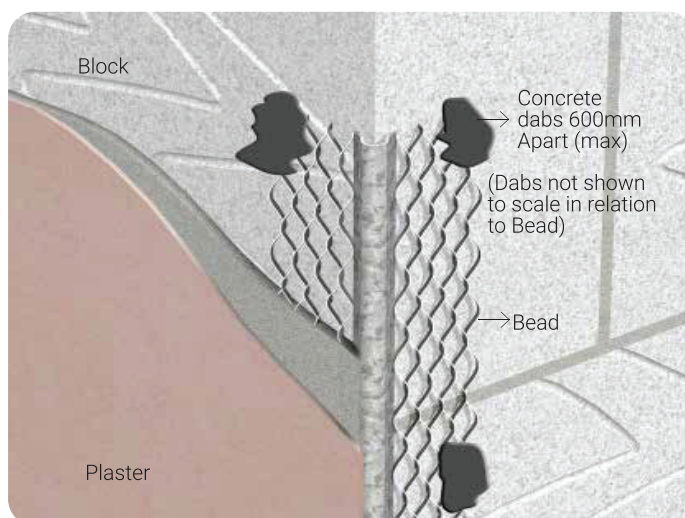
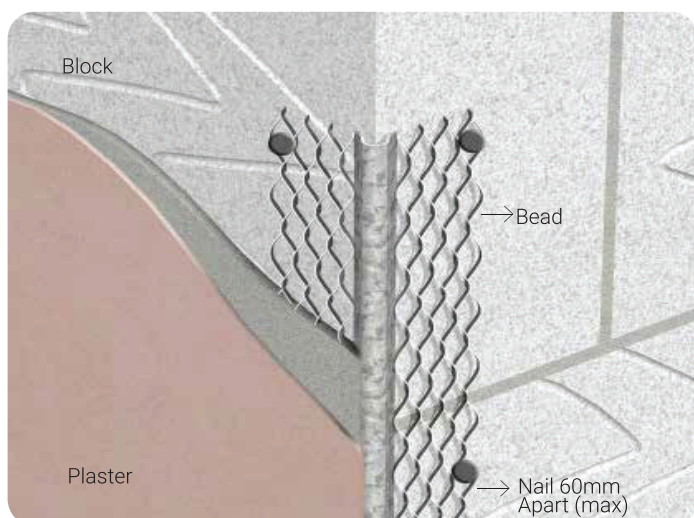
Installation of Metex Plaster Bead

The most appropriate METEX bead should be chosen to suit the application required plaster depth and the desired finish of the work. The application and installation of METEX beads should be in accordance with BS 5492:1990 code of practice for internal plastering and BS 5262: 1991 Code of Practice for external renderings.

Plaster Beads have become an indispensable part of plastering operations. Use of the appropriate beads greatly reduces the time in forming sharp corner joints, end stops and other details. Moreover, they offer protection and reinforcement to vulnerable plaster Edges.

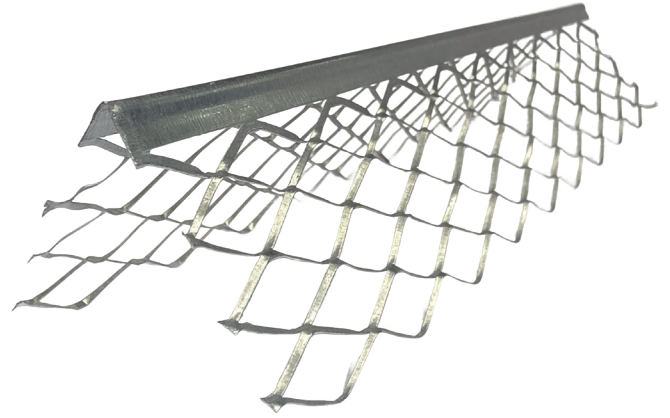
Beads may be trimmed to length using tin man's shears across the wings and a fine-toothed saw across bead noses. Use one of the following methods to fix METEX Angle Beads and Plaster Stop Beads.

- Beads should be fixed using plaster or render dabs or a suitable mechanical fixing at a maximum of 600 mm centers.
- Beads may be wire tied to the face of metal lathing backgrounds.
- Use tin snips or shears to cut to size.
- When joining angle, use a dowel inserted in the nose to ensure continuity and alignment.
- Avoid damage to beads as they are specifically designed for cement-based renders and should not be used with gypsum-based plaster unless they are specified with an approved protective finish.
- Epoxy /Plaster coated galvanized steel beads, with PVC nosing, are designed for external use only in sheltered or moderate environments.



Angle Bead

Galvanized Steel	Stainless Steel	Width of wing (mm)	Length (mm)	Qty/Box Pcs
ABG045	ABS045	45	3000	50
ABG050	ABS050	50	3000	50
ABG055	ABS055	55	3000	50
ABG060	ABS060	60	3000	50
ABG065	ABS065	65	3000	50
ABG070	ABS070	70	3000	50
ABG075	ABS075	75	3000	50
ABG100	ABS100	100	3000	50



*Special lengths available upon request.

Description

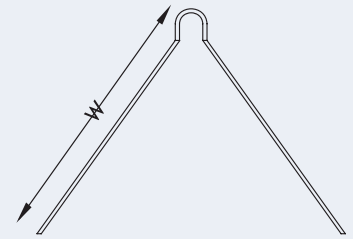
Angle Beads provide true and straight corners which are resistant to chipping and cracking giving strength and protection against everyday knocks

Fixing

Fix by either nailing or using plaster dabs.

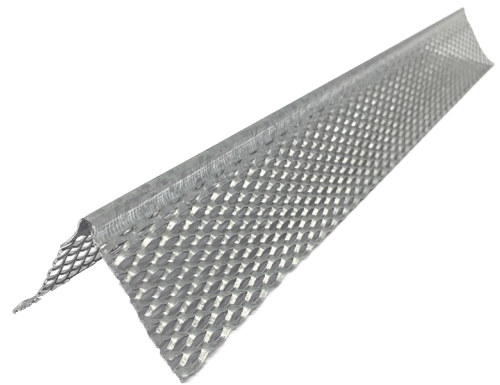
MATERIAL:

Galvanized Steel for internal use
Stainless Steel for external use.



Micro Angle Bead

Galvanized Steel	Stainless Steel	Width of wing (mm)	Length (mm)	Qty/Box Pcs
ABG-MICRO25	ABS-MICRO25	25	3000	50



*Special lengths available upon request.

Description

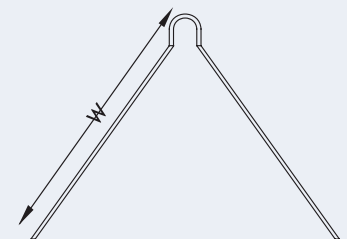
Micro Angle Beads are specially designed for single coat plaster and used at corners for excellent adhesion and good reinforcement.

Fixing

Fix by either nailing or using plaster dabs

MATERIAL:

Galvanized Steel for internal use
Stainless Steel for external use.



Plaster Stop Bead

Galvanized Steel	Stainless Steel	Plaster Depth (mm)	Length (mm)	Qty/Box Pcs
SBG010	SBS010	10	3000	50
SBG013	SBS013	13	3000	50
SBG016	SBS016	16	3000	50
SBG019	SBS019	19	3000	50

*Special lengths available upon request.



Description

Plaster Stop Beads provide clean, neat edges at openings or abutments onto other wall surface or ceiling finishes. They are available to suit various plaster depths.

Fixing

Fix by either nailing or using plaster dabs.

MATERIAL:

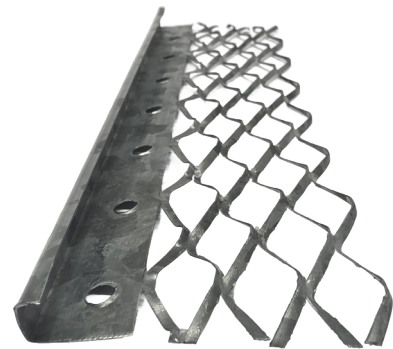
Galvanized Steel for internal use
Stainless Steel for external use.



Micro Plaster Stop Bead

Galvanized Steel	Stainless Steel	Plaster depth (mm)	Length (mm)	Qty/Box Pcs
SBG-006	SBS-006	6	3000	50

*Special lengths available upon request.



Description

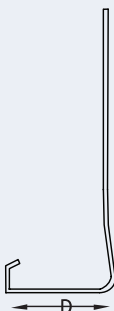
Micro Plaster Stop Bead is designed for thin/single coat plaster and used for the finishing & reinforcing of plaster edges.

Fixing

Fix by either nailing or using plaster dabs.

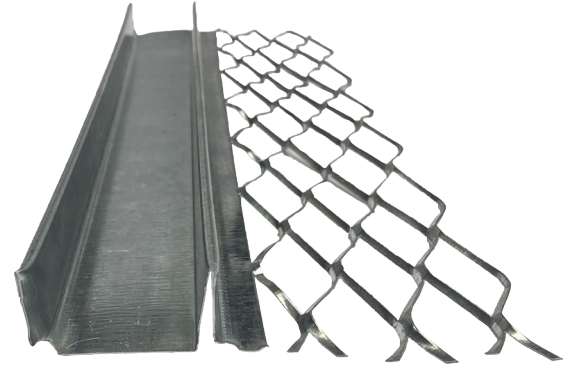
MATERIAL:

Galvanized Steel for internal use
Stainless Steel for external use.



Architrave Bead

Galvanized Steel	Stainless Steel	Width (mm)	Plaster Depth (mm)	Length (mm)	Qty/Box Pcs
ARCH-GI-10	ARCH-SS-10	10	10/13	3000	50
ARCH-GI-13	ARCH-SS-13	13	10/13	3000	50
ARCH-GI-15	ARCH-SS-15	15	10/13	3000	25
ARCH-GI-20	ARCH-SS-20	20	10/13	3000	25
ARCH-GI-25	ARCH-SS-25	25	10/13	3000	25



*Special lengths available upon request.

Description

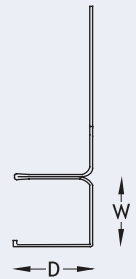
Architrave Beads are mainly used for aesthetic purposes to give a shadow line decorative effect and clean division between varying wall finishes.

Fixing

Fix by either nailing or using plaster dabs.

MATERIAL:

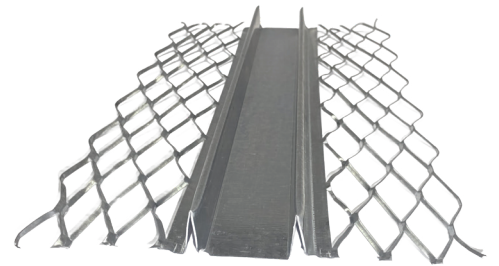
Galvanized Steel for internal use
Stainless Steel for external use.



Architrave Bead

Double Side Mesh

Galvanized Steel	Stainless Steel	Width (mm)	Plaster Depth (mm)	Length (mm)	Qty/Box Pcs
ARCH-GI-10-DOUBLE	ARCH-SS-10-DOUBLE	10	10/13	3000	25
ARCH-GI-13-DOUBLE	ARCH-SS-13-DOUBLE	13	10/13	3000	25
ARCH-GI-15-DOUBLE	ARCH-SS-15-DOUBLE	15	10/13	3000	25
ARCH-GI-20-DOUBLE	ARCH-SS-20-DOUBLE	20	10/13	3000	25
ARCH-GI-25-DOUBLE	ARCH-SS-25-DOUBLE	25	10/13	3000	25



*Special lengths available upon request.

Description

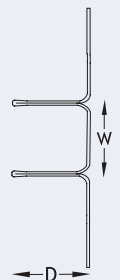
Architrave Bead Double Sided Mesh gives a shadow line decorative effect for aesthetic purposes and creates division between varying wall finishes.

Fixing

Fix by either nailing or using plaster dabs.

MATERIAL:

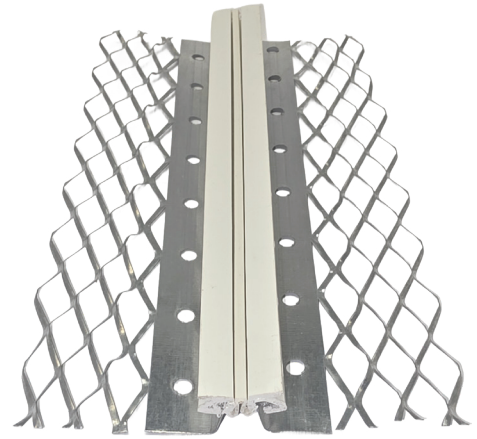
Galvanized Steel for internal use
Stainless Steel for external use.



Movement Bead

Galvanized Steel	Stainless Steel	Plaster Depth (mm)	Length (mm)	Qty/Box Pcs
MMV-GI-10	MMV-SS-10	10	3000	10
MMV-GI-13	MMV-SS-13	13	3000	10
MMV-GI-16	MMV-SS-16	16	3000	10
MMV-GI-19	MMV-SS-19	19	3000	10

*Special lengths available upon request.



Description

Movement Bead allows movement between adjoining surface finishes resulting from differential expansion or settlement. It is used to relieve the stress and strain in large plaster area of wall and ceiling stucco area

Fixing

Fix by either nailing or using plaster dabs.

MATERIAL:

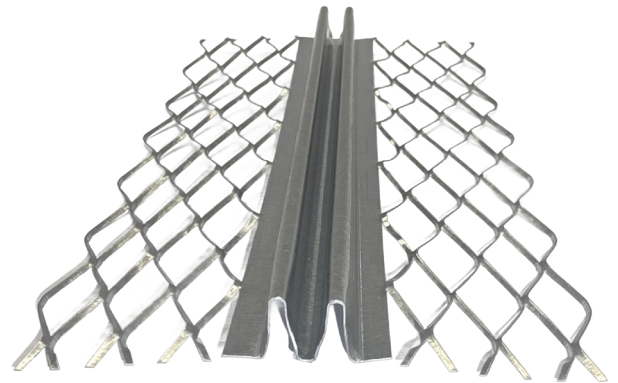
Galvanized Steel for internal use
Stainless Steel for external use.



Control Joint Bead

Galvanized Steel	Stainless Steel	Plaster Depth (mm)	Length (mm)	Qty/Box Pcs
MCJ - GI - 13	MCJ - SS - 13	13	3000	25
MCJ - GI - 19	MCJ - SS - 19	19	3000	25
MCJ - GI - 21	MCJ - SS - 21	21	3000	25

*Special lengths available upon request.



Description

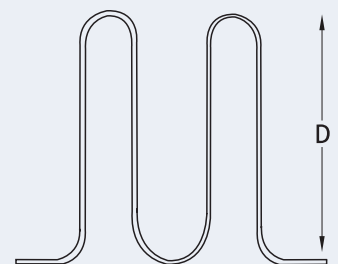
Control Joints are designed to relieve stress and minimize cracking. Control joints provide excellent expansion control for both walls and ceiling and offers positive locking of the stucco to the edge of the joint

Fixing

Fix by either nailing or using plaster dabs

MATERIAL:

Galvanized Steel for internal use
Stainless Steel for external use.

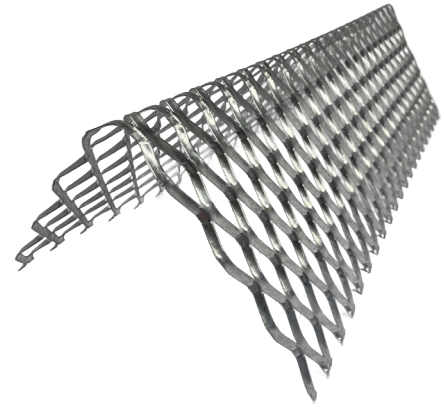


Plaster Mesh

- ✕ Corner Mesh/Lath
- ✕ Sheet Lath
- ✕ Strip Mesh
- ✕ Coil Lath

Corner Lath

Galvanized Steel	Stainless Steel	Mesh Wing Size (mm)	Length (mm)	Qty/Box Pcs
CMG050	CMS050	50MM	3000	50/BOX
CMG075	CMS075	75MM	3000	50/BOX
CMG100	CMS100	100MM	3000	50/BOX



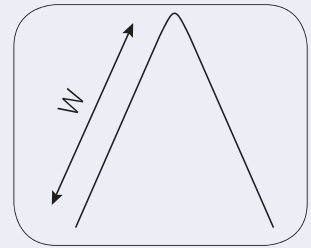
*Special width of wings, lengths and weights available upon request.

Description

Corner Lath is used in corners where walls meet walls or ceilings. This reinforcing of interior corners help prevent cracks.

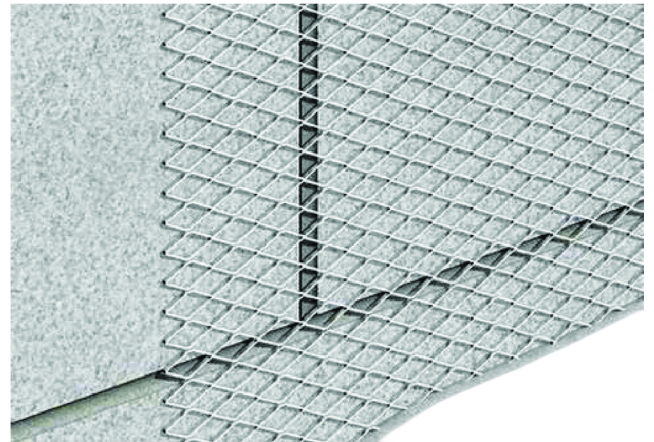
Material

Galvanized Steel for internal use
Stainless Steel for external use.



Sheet Lath

Galvanized Steel	Stainless Steel	Sheet Size Length x Width (mm)	Weight kg/m ²
MLS060-L	SLS060-L	2440 X 600	0.70
MLS060-S	SLS060-S	2440 X 600	0.90
MLS060-M	SLS060-M	2440 X 600	1.11
MLS060-H	SLS060-H	2440 X 600	1.63
MLS060-EH	SLS060-EH	2440 X 600	1.91



*Special width, lengths and weights available upon request

Description

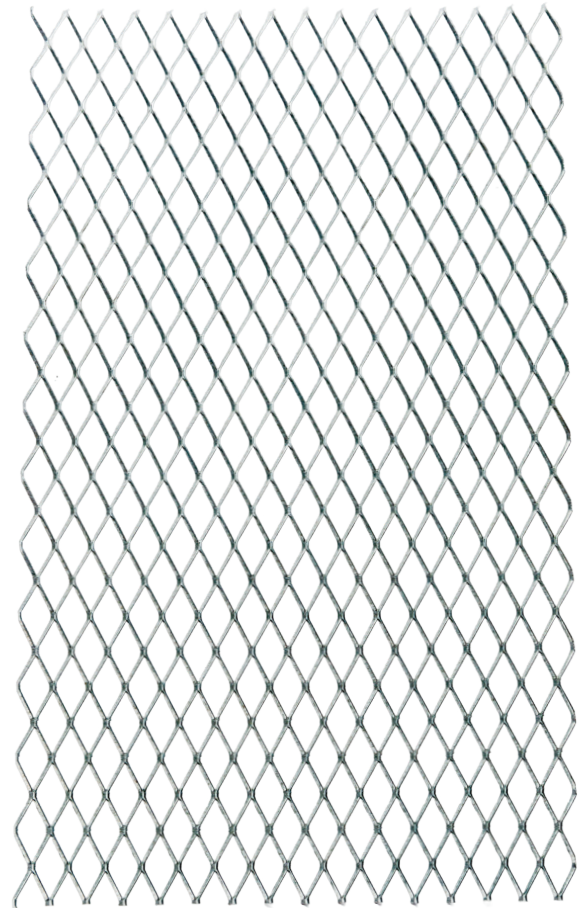
Sheet Lath is mainly used as a key for internal and external plaster when applied on suspended ceilings and walls. It is suitable for encasing steel columns and beams, assisting in the protection from fire

Material

Galvanized Steel for internal walls.
Stainless Steel for external walls and walls with more moisture contacts. Stainless Steel Grade 316/316L is advisable in marine environment

Strip Mesh

Galvanized Steel	Stainless Steel	Width (mm)	Length (mm)	Weight Kg/m ²
SLG100-L	SLS100-L	100	2440	0.70
SLG100-S	SLS100-S	100	2440	0.90
SLG100-M	SLS100-M	100	2440	1.10
SLG100-H	SLS100-H	100	2440	1.63
SLG100-EH	SLS100-EH	100	2440	1.91
SLG150-L	SLS150-L	150	2440	0.60
SLG150-S	SLS150-S	150	2440	0.70
SLG150-M	SLS150-M	150	2440	1.10
SLG150-H	SLS150-H	150	2440	1.63
SLG150-EH	SLS150-EH	150	2440	1.91
SLG200-L	SLS200-L	200	2440	0.70
SLG200-S	SLS200-S	200	2440	0.90
SLG200-M	SLS200-M	200	2440	1.10
SLG200-H	SLS200-H	200	2440	1.63
SLG200-EH	SLS200-EH	200	2440	1.91



*Special width up to 500mm and special lengths and weights available upon request.

Description

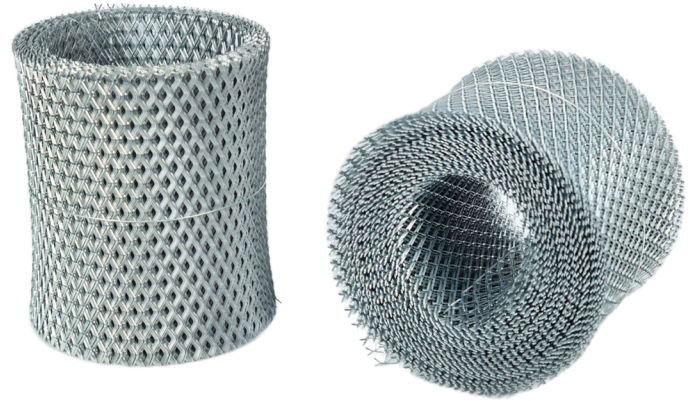
Expanded Strip Mesh provides reinforcement to the plaster to prevent crack over joints of different materials, electrical & mechanical conduits, doors and window lintels

Material

Galvanized Steel for internal walls. Stainless Steel for external walls and walls with more moisture contacts. Stainless Steel Grade 316/316L is advisable in marine environment

Coil Lath

Galvanized Steel	Stainless Steel	Width (mm)	Length (mm)	Weight Kg/m ²
MLC100-L	MLC100S-L	100	50/100	0.70
MLC100-S	MLC100S-S	100	50/100	0.90
MLC100-M	MLC100S-M	100	50/100	1.11
MLC100-H	MLC100S-H	100	50/100	1.63
MLC100-EH	MLC100S-EH	100	50/100	1.91
MLC150-L	MLC150S-L	150	50/100	0.70
MLC150-S	MLC150S-S	150	50/100	0.90
MLC150-M	MLC150S-M	150	50/100	1.11
MLC150-H	MLC150S-H	150	50/100	1.63
MLC150-EH	MLC150S-EH	150	50/100	1.91
MLC200-L	MLC200S-L	200	50/100	0.70
MLC200-S	MLC200S-S	200	50/100	0.90
MLC200-M	MLC200S-M	200	50/100	1.11
MLC200-H	MLC200S-H	200	50/100	1.63
MLC200-EH	MLC200S-EH	200	50/100	1.91



*Special width up to 500mm and special lengths and weights available upon request.

Description

Coil Lath is extensively used as plastering base to reinforce against cracks between joints of dissimilar materials

Material

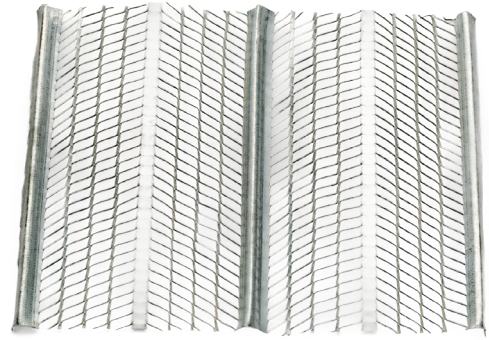
Galvanized Steel for internal walls. Stainless Steel for external walls and walls with more moisture contacts. Stainless Steel Grade 316/316L is advisable in marine environment

Rib Lath

✕ Hy Rib Lath

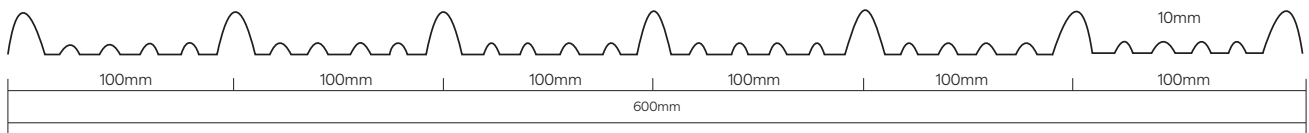
Rib Lath

Rib Lath is a versatile metal lath stiffened by the longitudinal ribs. The furring design of the mesh provides efficient plastering background for the construction of partition, suspended ceiling and refurbishment works.



Rib Lath Features:

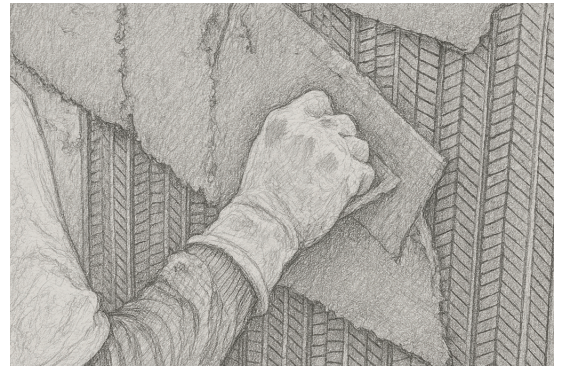
- Easy to cut and form to ornamental plaster work.
- Provides ample keying of scratch coat.
- Commonly used for plaster machine application.
- Gives a uniform coat depth for large area.



Galvanized Steel	Stainless Steel	Weight kg/m ²	Rib Depth (mm)	Width/Length (mm)
MRBL1.4	MRBLS1.4	1.48	10	600/2500
MRBL1.8	MRBLS1.8	1.84	10	600/2500
MRBL2.2	MRBLS2.2	2.22	10	600/2500

Installation

Rib Lath should be fixed with apexes of Ribs against the wall, edge ribs of sheet nesting into each other should be wire-tied every 150mm and ends fixing should be used at sufficient intervals to hold the lath firmly in position.



Fixing of Rib Lath

Rib lath is fixed so that the tip of the rib is placed against the supporting background. The rib of the sheet should run at right angles to any supports. Ensure that sheets are overlapped by a minimum of 50mm end to end and by 25mm width ways and that the ribs are nestled together.

Metal Support

Rib Lath is fixed at each rib to metal support using 1.63mm galvanized or stainless steel tying wire. When joining Rib lath sheets overlap the edge ribs and tie the edges with 1.22mm tying wire and 150mm center.

Timber Support

Rib Lath is fixed at each rib to timber supports using Plaster nails or staples. Ensure that compatible corrosion resistant fixings are used, i.e. Do not use galvanized fixings for stainless steel.

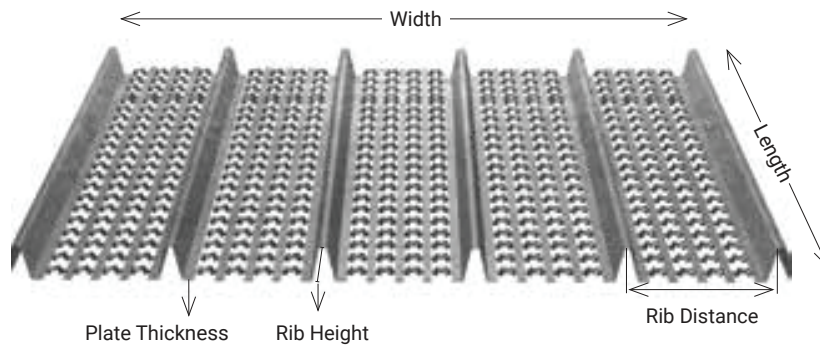
Solid Background

Rib Lath can be fixed to a solid background using a suitable fixing which holds the ribs firmly against the background. Where sheets are installed vertically, fixings should be positioned through all ribs at 600mm centers to ensure adequate stability

Hy Rib Lath

METEX Hy-Rib Lath is an expanded metal sheet product specifically developed for use as permanent formwork to concrete. Hy-Rib is heavier and stronger than Rib-Lath and is widely used as a combined shuttering and reinforcement for concrete, eliminating the need for close boarded shuttering.

Hy Rib Lath has excellent engineering quality, construction security and widely used in tunnels bridges, valve basement systems, sewage systems, subways, retaining walls, nuclear power plants, shipyards, water pools and marine engineering works and high rise building projects and non-regular or bending pattern as concrete permanent assembly-free form work.



Reference Code	Weight Kg/m ²	Rip Depth(D) mm	Width	Length	Material
MHB339	3.39	21	445	2500	Galvanized
MHB486	4.86	21	445	2500	Galvanized
MHB686	6.86	21	445	2500	Galvanized

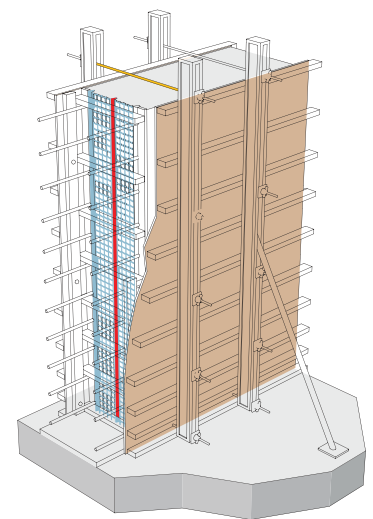
*Special lengths available upon request.

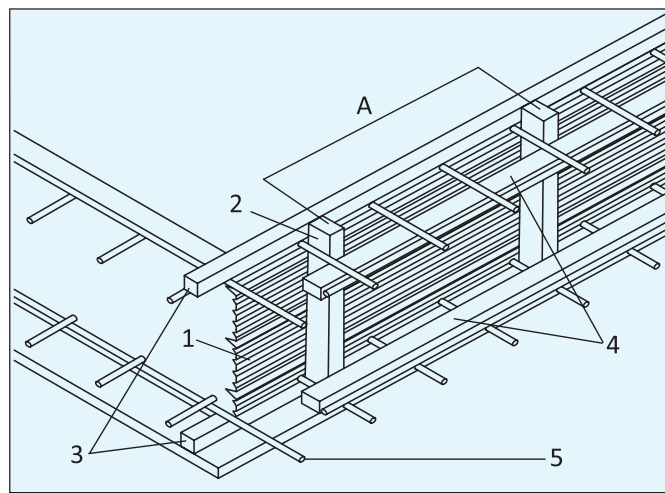
Installation

Lath should be fixed with apexes of ribs against the wall, edge ribs of sheets nesting into each other should be wire-tied every 15cm and ends of sheets should be lapped not less than 2.5cm and nesting ribs securely tied together.

Advantage of using Hy Rib Lath

- High Stability.
- Highly Economical with great spans.
- Improves site productivity and minimizes wastage.
- Reduces the risk of trapped air and voids within the concrete.
- Perfect bonding of the concreting sections without any further treatment of the expansion joint.
- Minimizing of hollow spaces and visual supervision of the process possible.





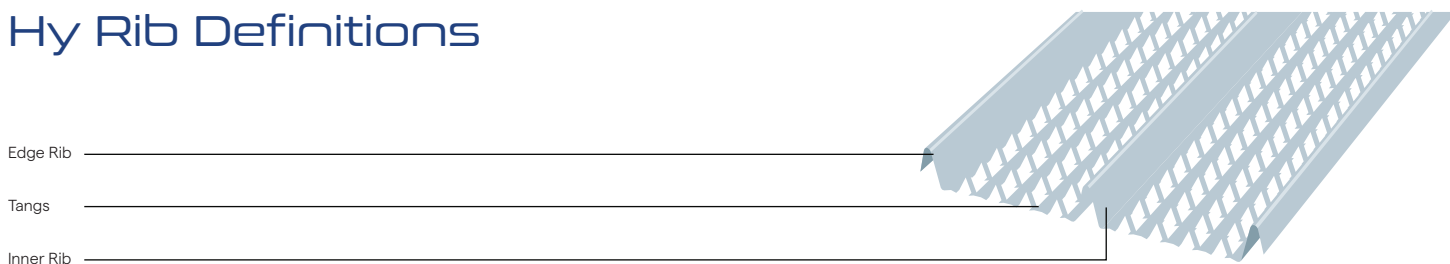
Hy Rib Processing Placing

Hy Rib ① is nailed to angular or profiled stiffening wood beams ②. Ribs should not be damaged or deformed during fixing. The closed ribs points towards the first concreting section since the ribs are exposed to the greater pressure. The ribs are placed cross to the stiffening wood beams.

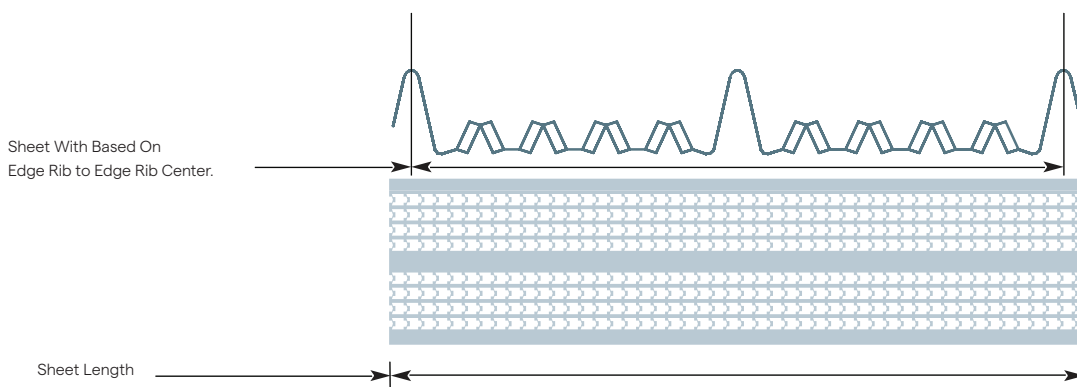
Hy Rib requires the same concrete covering as reinforcing steel. In order to maintain the prescribed concrete covering timber rails ③ are nailed to the upper and lower sides of the construction unit as range spacers and to the stiffening woods beams.

The stiffening wood beams ② are nailed to the sheathing and held by wooden ledges ④, which are propped against the existing reinforcement.

Hy Rib Definitions



Measuring Point



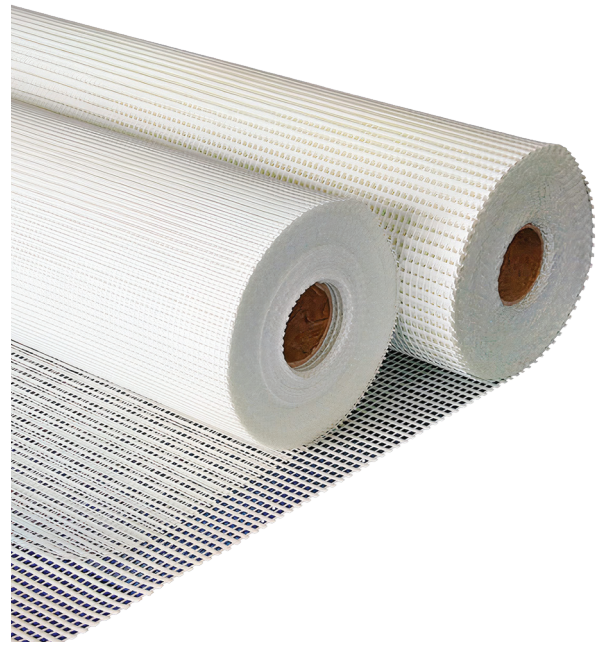
Fiber Glass Mesh For Plastering

Aluminum
Channel

Wall and
Ceiling Mesh

Technical
Specifications

The Fiber glass alkaline resistance mesh is based on C- glass woven fabric, and then coated by acrylic acid copolymer liquid, possesses the properties of good alkaline resistance, high strength, good cohesion, excellent in coating etc. It is widely used in wall reinforcement outside wall heat insulation & roof waterproofing. It can also reinforce cement, plastic, bitumen, plaster, marble, mosaic etc. It is an ideal engineering material in construction. Fiberglass alkaline resistance mesh fabric as the basis structure in the heat insulation system. It can prevent cracks because of the good chemical corrosion resistance and high strength of wrap and weft, it can spread stress equally on different directions to avoid transfigure in the heat-insulation system if it is submitted in a large strength; It is also easy to be applied. It is really the soft steel in the outside wall heat preservation system. Fiberglass mesh can be reinforcing and protect stones because of its high strength and balance structure. It can spread the stress equally. In addition, it is easy to be stuck in the back of marble, mosaic and stone. It is an ideal reinforcement for all stone processing factories.

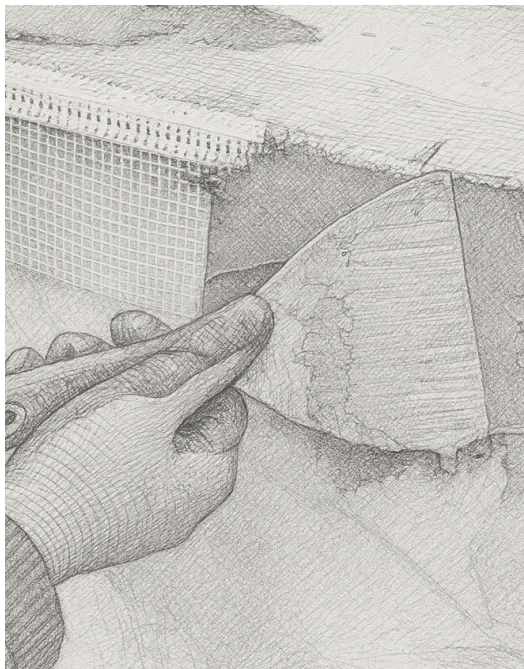
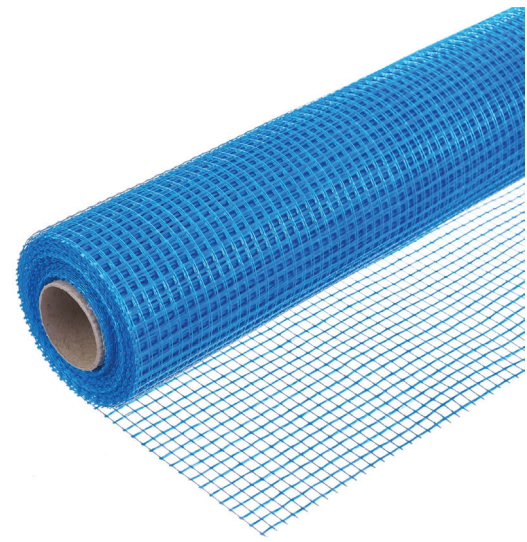


Technical Specification

Mesh Size	5x5mm ± 0.5 mm	Mesh Size	8 x 8 mm ± 0.5 mm
Weave Construction	Warp : 5*2 per inch Weft : 4.5 per inch	Weave Construction	Warp : 5*2 per inch Weft : 4.5 per inch
Warp Yarn	134 Tex glass yarn	Warp Yarn	134 Tex glass yarn
Weft Yarn	400 Tex glass roving	Weft Yarn	400 Tex glass roving
Weave Type	Leno	Weave Type	Leno
Thickness	0.38 ± 0.02 mm	Thickness	0.38 ± 0.02 mm
Coating	Alkali Resistant (Tensile Strength retention more than 50%)	Coating	Alkali Resistant (Tensile Strength retention more than 50%)
Finish	Medium Hard	Finish	Medium Hard
Total gsm	160 ± 5% gsm	Total gsm	80 ± 5% gsm
Width	1000 mm	Width	1000 mm
Feather Edge	Slit Edge	Feather Edge	Slit Edge
Length	50 m roll	Length	50 m roll
Tensile Strength	Warp 2400 N/5 CM with Elongation - 4.0% Warp 2000 N/5 CM with Elongation - 4.0%	Tensile Strength	Warp 1100 N/5 CM with Elongation - 3.8% Warp 900 N/5 CM with Elongation - 3.8%

Advantage of using Fiber Mesh

- Great chemical and mechanical stability
- Fire and alkalinity resistant.
- Rust Free, they do not degrade over time, and they are unalterable and tear proof.
- High tensile strength, absorbs the expansion caused by extreme temperature changes and the settlement on different parameters, thus preventing cracks in the covering plaster layer.
- Easy to install since they are lightweight, quick, and economical.
- Due to their flexibility, they can adapt to any surface.



Functions of Fiber Mesh

Reinforcement

The Fiber Glass Mesh reinforces cracks, fissures and the assembly of plaster.

Resistance

Increases the resistance to impact.

Increases

Rendering Mesh increases the integrity of plasters and their finish.

Prevent Cracks And Fissures

The Fiber Glass Mesh provides solution to prevent cracks and fissures in the civil works and construction sector.

Installation

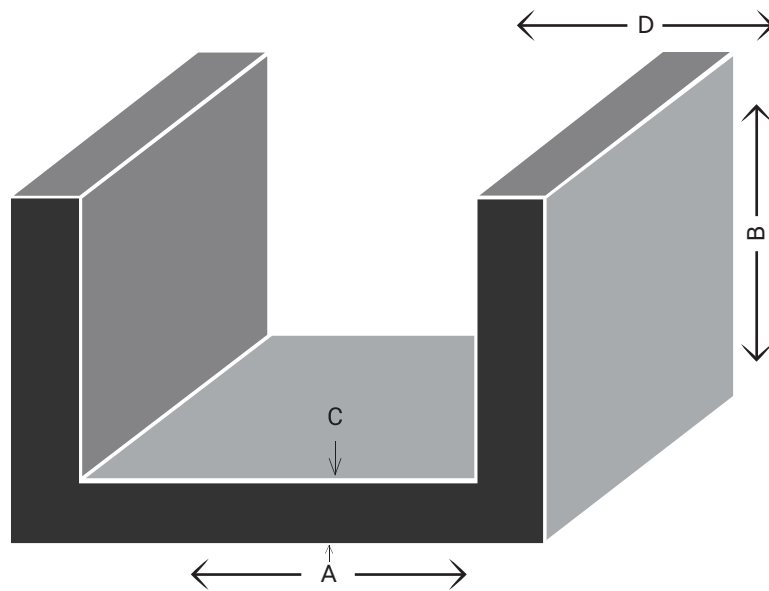
- Fiber Glass Mesh is installed after fixing of thermal insulation material to the base surface.
- A rough coat of plaster is applied to the insulation material. Works are carried out on small areas, as the mixture tends to harden quickly.
- The Fiber Mesh is cut according to required size and put to the non-congealed solution. Next, take a wide spatula, smooth out mesh and press it a bit into the freshly applied plaster.
- Wait till the surface with mesh dries well.
- During installation of fiber glass mesh, it is necessary to ensure that each strip finds a previous strip with an overlap of 15-20 cm. Otherwise, cracks may appear during operation.
- When spackling is completed, one can start applying the finishing layer.

Aluminum Channel

METEX Aluminum U-Channel is an extruded product with sharp ninety degree inside and outside corners making this shape ideal for trim applications. The product is widely used for all types of fabrication projects where lightweight and corrosion resistance is a primary concern.

Specification

Metex Aluminum U-Channel (ALLOY 6063.T6) follows BS: 1474 for extrusion dimension tolerances with anodizing finish produced under BS EN 12373-1 2001 Clause 7 (BS 6161 Part 6) BS: 3987 Clauses 2, 3, 5, 6 having a powder coating in reference to BS: 6496 Clause 10.4, 10.5, 10.6, 10.7 & 10.8.

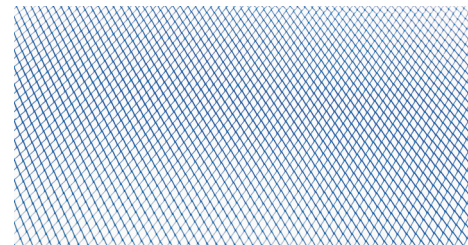
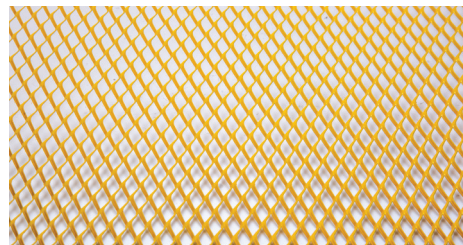
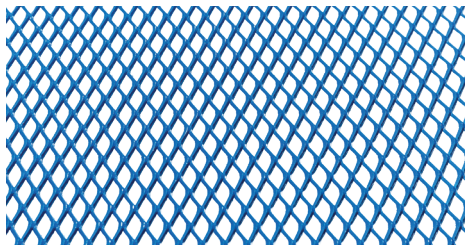
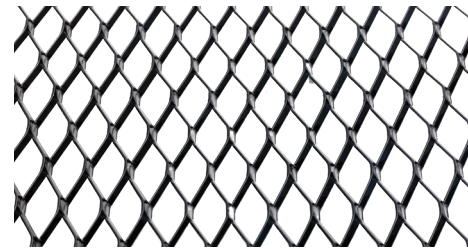
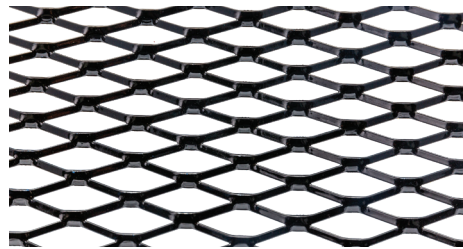
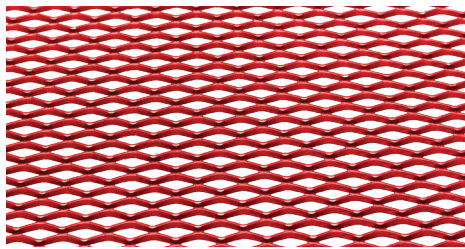


Height (mm)	Width (mm)	Length (M)	Thickness (mm)
10	10	6	1.50 - 2.0MM
15	15	6	1.50 - 2.0MM
20	20	6	1.50 - 2.0MM
20	30	6	1.50 - 2.0MM
25	25	6	1.50 - 2.0MM
20	45	6	1.50 - 2.0MM

*Special lengths available upon request.

Decorative Expanded

Metal Mesh



Material Type

Galvanized Steel
 Stainless Steel
 Aluminum

Standard Size

1220mm x 2440mm

*Other sizes are available upon request.

Mesh Opening:

Sizes	Mesh Opening
8mm X 16mm	62.5 %
20mm X 40mm	80 %
38mm X 16mm	75 %

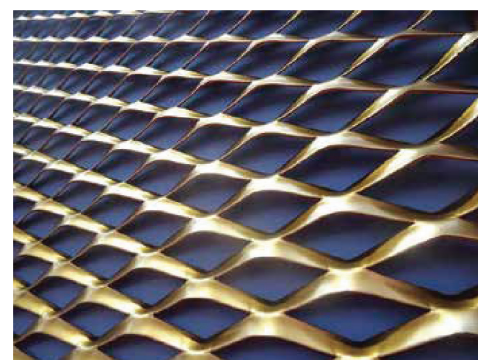
Thickness:

Galvanized Steel	Stainless Steel	Aluminum Steel
0.5MM TO 2MM	0.5MM TO 1MM	0.5MM TO 4MM

Wall and Ceiling Mesh

Diamond Metal Lath is used for walls and ceilings to resist cracking and give key to Plastering when insulation materials are used.

Metex Diamond Lath meshes are manufactures from lock forming quality galvanized steel conforming to BS EN 13658-1 & 2:2005(formerly BS 1369:Part 1:1987) with quality Zinc coating Z1449 Part 2 1983 grade 304 S15 (ASTM Grade 304/S15).



Type	Thickness (mm)	Weight kg/m ² (lb/yd ²)	Mesh Size (mm)	Sheet Size M	Qty/Box Pcs
ECONOMY TYPE	0.500	0.50 (0.92)	SWD-10	2.5 X 0.7	255
WALL TYPE A	0.500	1.00 (1.84)	SWD-10	2.5 X 0.7	275
WALL TYPE B	0.500	1.22 (2.25)	SWD-10	2.5 X 0.7	300
CEILING TYPE	0.675	1.62 (3.00)	SWD-10	2.5 X 0.7	300

Technical Specifications

Plaster Beads

Material	Standard
Manufacturing	BS EN 13658-1 & 2:2005 (formerly BS 6452:Part 1: 1984) ASTM C 847, ASTM C 1063
Pre Galvanized Steel Complying	BS EN 10346:2005 (formerly BS EN 10142:1991) coating Type: Z180-275 ASTM A 653/A653M
Stainless Steel Complying With	BS EN 10088:2-2014(formerly BS1449: Part 2:1983 in Grade 304, 316, 316L ASTM A240/A240M in Grade 304,316 and 316L

Expanded Metal Mesh

Material	Standard
Manufacturing	BS EN 13658-1 & 2:2005 (formerly BS 6452 Part 1: 1984) ASTM C 847, ASTM C 1063
Pre Galvanized Steel Complying	BS EN 10346:2005 (formerly BS EN 10142:1991) coating Type: Z180-275 ASTM A 653/A653M
Stainless Steel Complying With	BS EN 10088:2-2014(formerly BS1449: Part 2:1983 in Grade 304, 316, 316L ASTM A240/A240M in Grade 304,316 and 316L

Wall Ties (Sheet Production)

Material	Standard
Manufacturing	BS EN 845-1:2003(formerly BS EN 1243)
Pre Galvanized Steel Complying	BS EN 10346:2009(formerly BS EN 10142:1991) ASTM A 653/A653M
Mild Steel Complying With	BS EN 10149-3:1996 BS EN ISO 1461:1999 (formerly BS 729)
Hot Dip Galvanizing	BS EN ISO 1461:1999(formerly BS 729) ASTM A 123/A123M, ASTM A153/A153M
Stainless Steel Complying With	BS EN 10088:2-2005(formerly BS 1449:Part2:1983) in Grade 304, 316, 316L, 2B finish ASTM A240/A240M in Grade 304, 316 and 316L

Wall Ties (Wire Production)

Material	Standard
Manufacturing	BS EN 845-1:2003(formerly BS EN 1243)
Cold Drawn Steel For Reinforcement	BS 4482:2005 ASTM A 496/ A 496M, ASTM A 82/A 82M
Hot Dip Galvanizing After Fabrication	BS EN ISO 1461:1999(formerly BS 729) ASTM A 123/A 123M, A 153/A 153M
Pre Galvanized Wire	BS EN ISO 10244-2:2001(formerly BS 443) ASTM A 641/ A 641M
Stainless Steel Wire	BS EN 10088:2-2005(formerly BS 1449:Part2:1983) in Grade 304, 316, 316L, 2B finish ASTM A 580/A 580M

Block Reinforcement Mesh (Ladder / Truss Type)

Material	BS EN 845-1:2003ASTM A 951/A 951M
Cold Drawn Steel For Reinforcement	BS 4482:2005 ASTM A 1064/A 1064M (formerly ASTM A496 & ASTM A 185) ASTM A 82/A 82M
Hot Dip Galvanizing After Fabrication	BS EN ISO 1461:1999(formerly BS 729) ASTM A 123/A 123M, A 153/A 153M
Pre Galvanized Wire	BS EN ISO 10244-2:2001(formerly BS 443) ASTM A 641/ A 641M
Stainless Steel Wire	BS EN 10088-3:-2005(formerly BS 1554:1990) in Grade 304, 316, 316L ASTM A 580/A 580M ASTM A 1022/A 1022M, Grade 304,316, 316L
Masonry Reinforcement	ASTM A 496/ A 496M

Lintels

Manufactured To	Formerly BS EN 845-2:2013, BS 5977: Part 1:1983
Galvanized Steel	BS EN 10346:2015 (formerly BS EN 10142:1991) coating Type: Z180-275/450 , ASTM A 653/A 653M(formerly ASTM A525)
HDG1	BS EN ISO 1461:2009
TEST	BS 476 (Fire Test)



متكس مصنع تمديد المعادن
METEX METAL EXPANSION FACTORY



25
YEARS



Office: 04 899 2333

Logistics: 04 572 4555

P.O. Box: 118960 Block A, Phase 3,

Dubai Industrial City,

Dubai, United Arab Emirates

sales@metex.ae / info@metex.ae